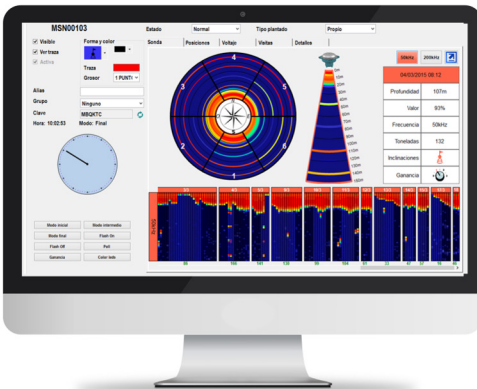


# SONAR BUOY

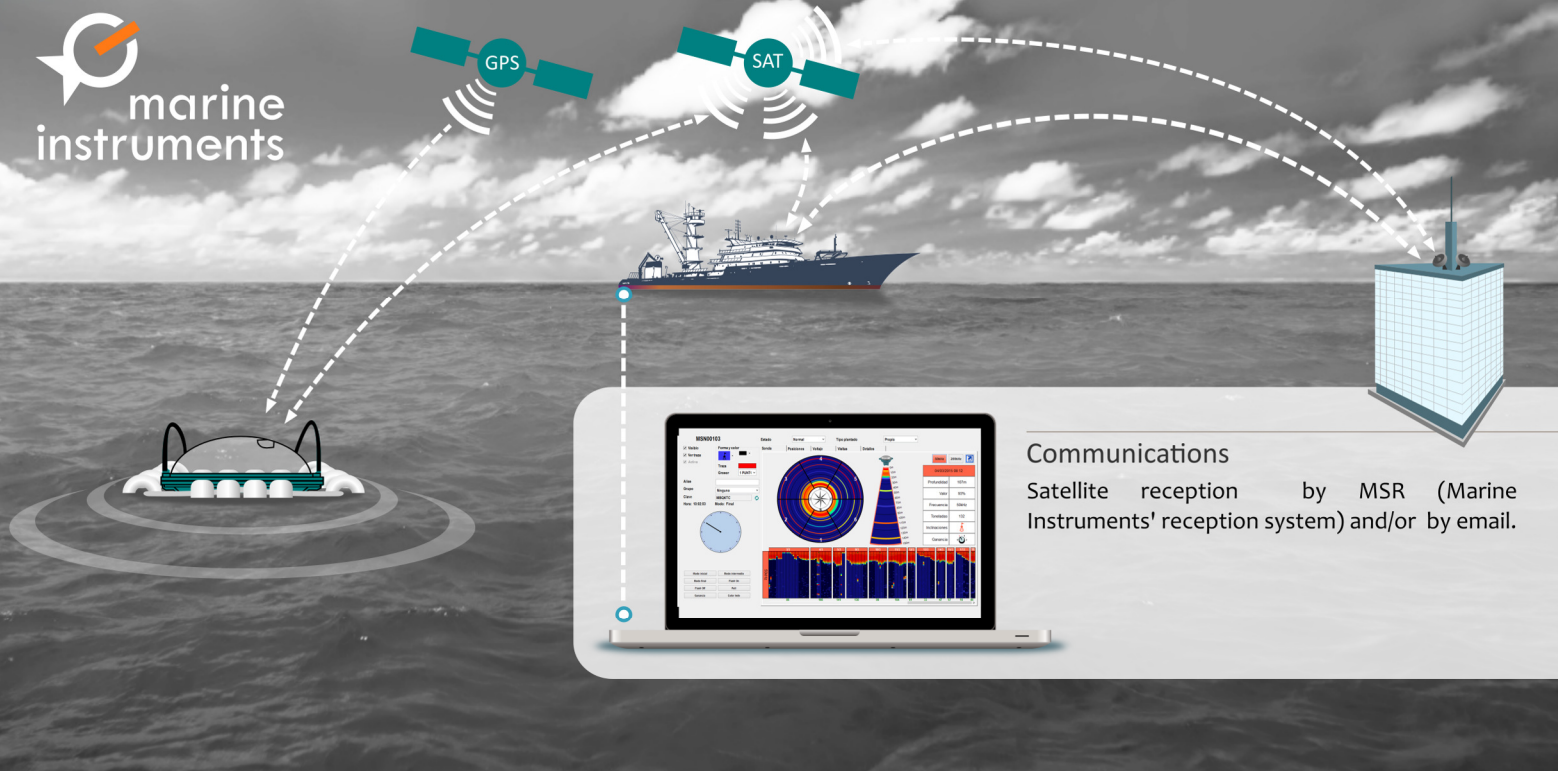
Buoy with 7 transducers



- LED lights for tuna aggregation.
- Detection of sizes and species.
- Inclinometer for more precise soundings.



- Buoy with **7 transducers** to accurately identify fish location and aggregation.
- **Simultaneous soundings** every 5 sec. in 50 and 200 kHz:
  - **50 kHz** to detect the bigger specimens or fish species with swim bladder.
  - **200 kHz** to detect the smaller specimens or fish species without swim bladder.
- **Inclinometer** to detect the buoy's inclination and only send/store accurate and valid soundings.
- Transmission of the best sounding every **15 minutes**.
- High storage capacity: Inner **SD card** to store all soundings in the buoy's memory for one year.
- **Multicolour LED lights** to help the aggregation of fish during the night.
- **Remote control** to switch LEDs on/off.



### Communications

Satellite reception by MSR (Marine Instruments' reception system) and/or by email.

### Technical features

#### Echosounder

50 KHz and 200 KHz.

#### Weight

10,3 Kg.

#### Resolution per layer

3 m.

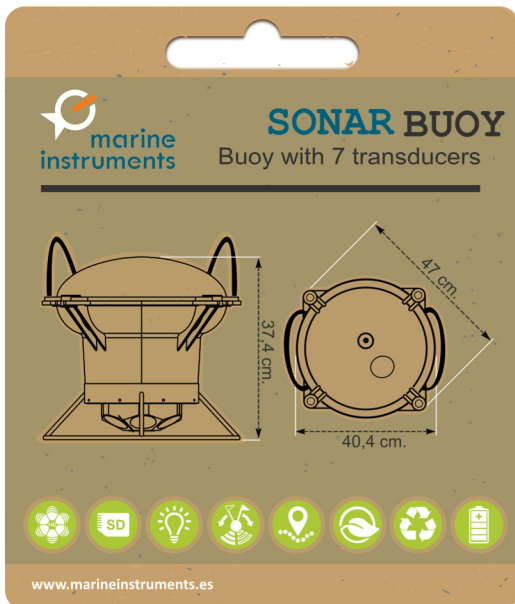
#### Blind area

3 m.

#### Range

150 m.

#### Dimensions



- **Safe communications via Iridium.** Flat rate for cost effectiveness.
- **Additional data:** GPS position, water temperature and battery level.
- **Solar panels** and back-up ecological alkaline batteries. Lead free.
- Compatible with **MAXSEA, ORBMAP and CATSAT.**



Sonar buoy v101