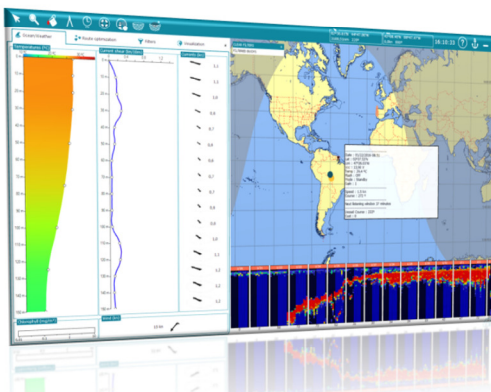




- Meteo-oceanographic data available
- Brand new features and functionalities



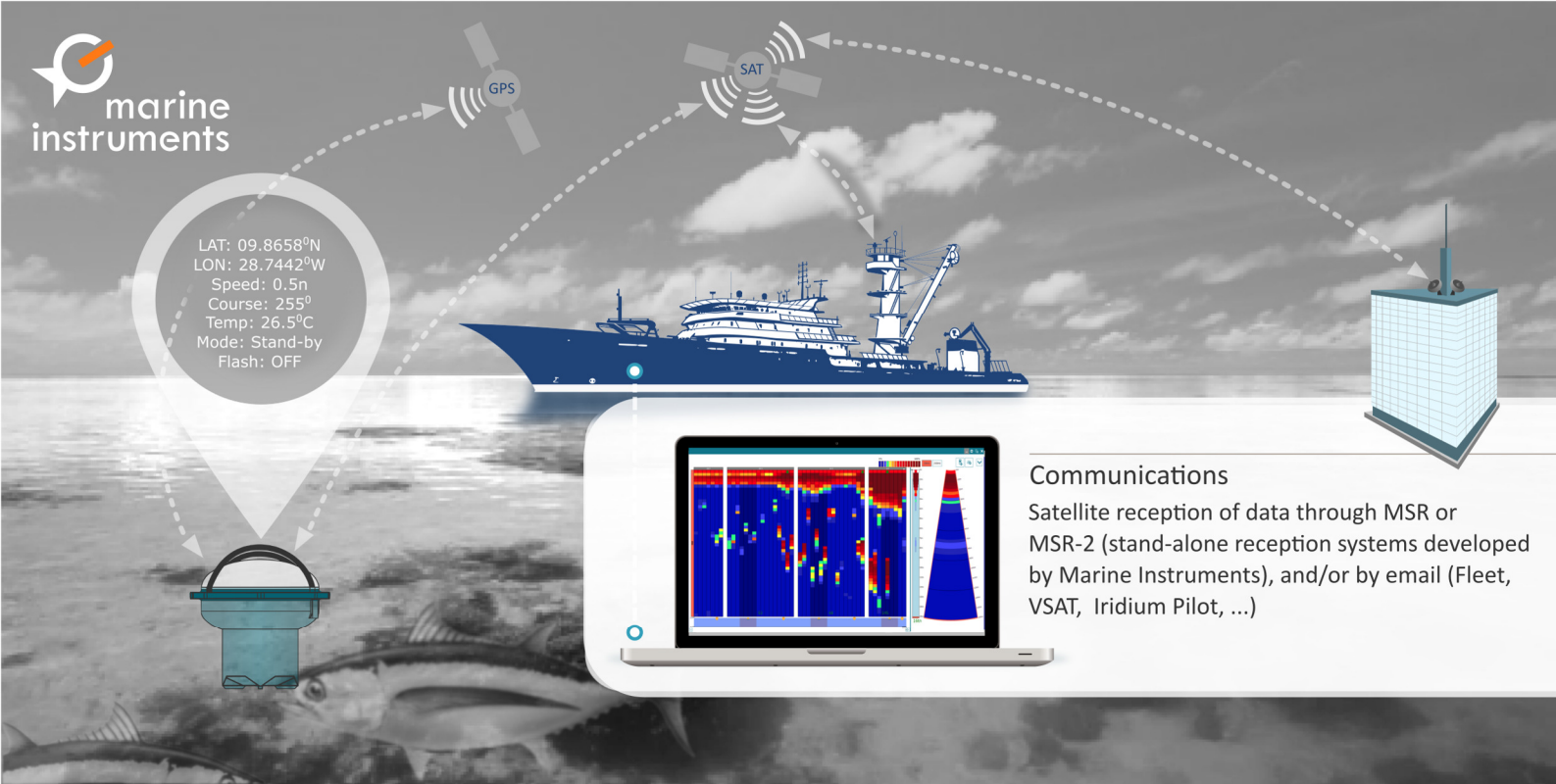
Meteorological and sounder data visualization in the new MSB+



Best route feature

NEW!

- Reception of **meteo-oceanographic data** of each registered position of the buoy:
 - **Chlorophyll** levels (plankton)
 - **Water temperature** (up to 150m)
 - **Shear flows** in the water column (up to 150m)
 - Surface **wind speed**
- **Feature to calculate the best route.** Automatic calculation of the best route for a more efficient buoy picking.
- **New visualization modes** for intuitive and easy browsing.
- **Renewed interface** with new icons, windows and menus.
- Reception of data on **speed, course and drift of each buoy.**
- **Sending of telecommands to buoys** from the programme to:
 1. Change the mode of operation
 2. Turn on /off flash
 3. Adjust sounder gain
 4. Ping for real time data



Communications

Satellite reception of data through MSR or MSR-2 (stand-alone reception systems developed by Marine Instruments), and/or by email (Fleet, VSAT, Iridium Pilot, ...)

Technical features

Operating system	XP SP3 or higher
Minimum requirements	1,5 GHz processor, 1GB RAM and 2GB hard disk available.
Recommended	2,5 GHz processor and 4GB RAM
Recommended minimum resolution	1280 x 768
Monitor	21" or higher

- **Fast visualization of sounder data in screen.** Different colour palettes (16)
- **Automatic activation** of buoys on board.
- Possibility to create **groups of buoys and export buoy's data** to a file.
- **Position, speed and course** of the vessel in real time.
- **Drawing and text tools** over the map.
- **Antenna** coverage level.
- **Integrated help** in several languages.
- Compatible with **MAXSEA, TIMEZERO, TELAURUS SE@COM and CATSAT.**